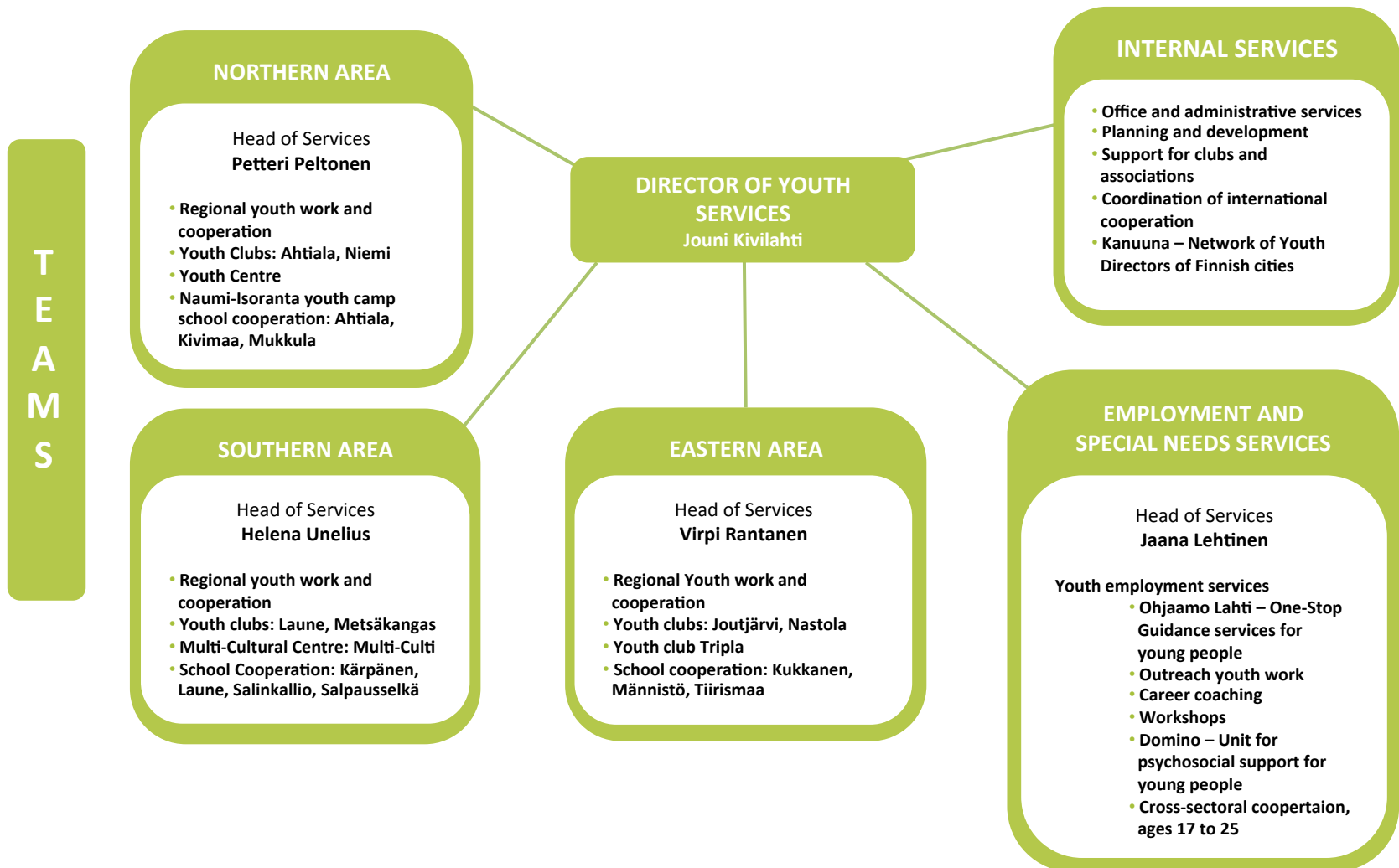


# Youth Services in Lahti 2017

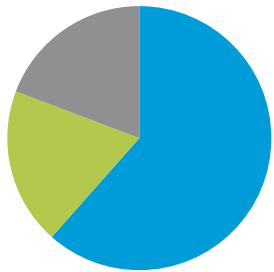


# Organisation of Youth Services



# Resources and volume of activities

## Number of employees: 104



- Permanent Members of Staff: 64
- Under Fixed-term Contract: 20
- Employed By The Hour: 20

- 2016 budget, expenses € 4 875 500
- 2016 budget, income € 688 200
- Facilities: 10 + Youth camp
- Facilities, Square meters: 9351 + Youth camp

## FIGURES

# 2016

Participants  
and clients  
**229448**

Client feedback,  
average rating  
**4,3**

Number of young  
People with  
special needs  
supported  
**681**

Number of young  
People using  
Employment  
services  
**447**

Number of  
young People  
employed with  
subsidies Salary  
**100**

# Lahti City Youth Work

- Regional work
- Youth Work at Schools
- Youth Work at Shopping Centres
- Cultural Youth Work (Events, support for independently organised activities)
- Youth Participation and Decision-making (Youth Council, Youth Workshop Committee, Youth Club committees, Consultation models, Multi-Culti committee )
- Multicultural Work
- International Work
- Youth Policy
- Psycho-Social Support
- Employment Services
  - Career Coaching
  - Workshops
  - Outreach Youth Work
  - Ohjaamo Lahti – One Stop Guidance Services for Young People



# Three Service Regions–

South, East and North

## Regional services for children, young people and with young people

- Youth clubs and facilities provide activities for young people between 10 and 20 years of age
- Activities for 16+ young adults
- Targeted activities for families with children
- Groups of young people participating in the decision-making to develop activities in their areas
- Youth work in secondary schools
- Cooperation between primary and secondary schools
- Weekend, holiday and thematic events



Sivistystoimiala

[www.lahti.fi](http://www.lahti.fi)

# Youth Work at Schools

**Youth services are contributing to the creation of communal operating cultures together with schools.**

- Cooperation between schools and youth services is based on school-specific plans designed together.
- Focus on methods that increase safety and participation at different age groups
- Team building activities
- Cooperation between different school classes
- Activities during lesson breaks
- Thematic lessons
- Student council and peer mentor cooperation
- Cooperation in transition phases
- Small group work
- Activity-based parents' evenings

# Youth Participation and Decision-making

- The youth services include young people in their decision-making.
- A number of different models are available through the youth services that make it easy for young people to learn about taking responsibility, participation and decision-making and democratic processes.

Forums for activities include:

- Youth club committees and meetings
- Workshop Committee
- Youth Council of Lahti
- Multi-Culti Committee of volunteers

Furthermore, groups of young people are brought together to contribute to planning of new activities, such as a planning group for a new youth centre.



# Multicultural Work

**Multiculturalism is an integral part and method permeating all youth work.**

In practice, multicultural work

- Promotes equality
- Fights against racism and for zero tolerance of discrimination
- Uses a variety of active methods and organises a variety of events for schools and youth clubs.
  
- The multicultural centre Multi-Culti is a part of Lahti youth services. Its aim is to create, in cooperation with different kinds of people, a region where equality and diversity is valued. Its activities are developed and designed by the Multi-Culti Committee.



# International Work

- International work of Lahti youth services is a tool to accomplish educational objectives and those relating to youth work, to develop working methods and improve competences of staff.
- We participate in the EU's Erasmus+ Programme: EVS, youth exchanges, staff training
- Nordic cooperation – Novu



# Employment services and services for special needs

## DOMINO

Unit for psychosocial support for young people

Support in mental health issues

Crisis support

Work with substance abuse

Start-off coaching

## EMPLOYMENT SERVICES FOR YOUNG PEOPLE

Outreach youth work

Career coaching

Workshops

Ohjaamo Lahti project –  
One-Stop guidance services for young people

# Domino – The unit for psychosocial support

## Support in mental health issues

- Target group is young people of 17 to 25 years of age with a variety of mental health issues.
- We offer individual support to improve mental health and to motivate young people build themselves a good life.
- Methods include confidential one-to-one discussions, doing things together and help with day-to-day affairs.

## Crisis support

- Target group is young people of 17 to 25 years of age and their families who have faced an unexpected and dramatic event in their lives.
- The aim of the service is to talk through what has happened, to help through the different stages of the crisis, to reduce human suffering and to help people cope.
- Methods also include dealing with feelings and thoughts, acceptance of the event, practical help, guidance and support.



# ...continued

## Prevention of substance abuse

- Preventative work in substance abuse offers young people of 13 to 25 years of age and their families support and help in remaining free from alcohol and drugs and to prevent related problems.
- The aim of the work is to prevent young people from experimenting with alcohol and drugs and to tackle symptoms and problems following from substance abuse.
- We also offer support to people to stay sober after alcohol and drug rehabilitation.

# ....continued

## Start-off coaching

- Start-off coaching is targeted at young people of 15 to 25 years of age who need support and guidance in employment, education and training opportunities and finding their direction after finishing their compulsory schooling.
- Start-off coaching helps young people manage their everyday life, helps them integrate and gives them tools to prepare them for work and further education and training.
- Young people get to practise their skills and knowledge in groups and individually.
- Young people learn about different work and training opportunities by visiting interesting places and through external experts.
- The duration of the coaching is tailor-made for each individual.

# Youth employment services

## Outreach youth work

Support and motivation for unemployed young people

## OHJAAMO LAHTI

- Address: Kirkkokatu 21 E
- Multisectoral employment and education guidance services

## YOUTH WORKSHOPS

- 5 months
- Groups, start February-September
- Work trials, salary subsidies
- Drama workshop
- Interior decoration workshop
- Environment workshop
- 6 months
- Primarily salary subsidies
- Rolling deadline
- Car and metal workshop
- Arts and crafts workshop
- Catering workshop
- Media workshop
- Carpentry workshop

## CAREER COACHING

- Work trials
- Jobs with subsidised salary
- Curriculum
- "On the way to work" service (Matkalla duuniin)
- Enterprises
- Organisations
- Different city council departments

## COURSES

- Courses to improve vocational competences
- Courses to acquire a variety of licences (e.g. Firts aid)

## GROUP COUNSELLING

- future planning
- employment information
- health and welfare
- managing finances
- job search training

## INTERNATIONAL COOPERATION

- EVS – European Voluntary Service

## IMPROVING YOUTH PARTICIPATION

- Workshop council
- Weekly meetings
- KEFO – The forum for development of youth services
- Social media council
- Nuotta-coaching – Coaching for young people with special needs (emphasis social and life management skills)

WORK, EDUCATION OR ANOTHER PLAN

# Ohjaamo Lahti

## One-Stop Guidance services for young people



**An ESF project of the Lahti Youth Services 2015-2018**

To create a new work and service model for 17 to 25-year-olds in Lahti

- All employment and education and training services from one place
- A part of the Finnish youth guarantee initiative

Implemented in cooperation with various organisations, including Lahti Youth Services/ Employment services; Häme TE-office (public employment and business services); Salpaus Further Education / Kohtaamo Project, Social Work for Adults, 3rd Sector; Lahti University of Applied Sciences and Lahti City Health Care Services

*Ohjaamo Lahti Unit*  
*Open Mon-Fri 10-16*  
*Just show up! No reservation needed.*

**Ohjaamo Lahti**  
Kirkkokatu 21 E,  
courtyard  
[www.ohjaamolahti.fi](http://www.ohjaamolahti.fi)



Sivistystoimiala

[www.lahti.fi](http://www.lahti.fi)

# Outreach Youth Work

- This work is based on the Finnish youth law: **section 7b § Outreach Youth Work**  
"The aim of outreach youth work is to reach out to young people in need and guide them to services and support systems that support their growth and independence as well as access to education, training and the labour market."

## Clients are young people in Lahti:

- 17 to 24-year-olds
- those who have dropped out from vocational education and training, upper secondary education, military or non-military service
- those without a place to study or a job
- young people who have not found their way to existing support and service systems

# ...continued

## **The aim of outreach youth work is**

- To map the situation of the young person in question / assess his or her support needs
- To motivate
- To discuss together the most suitable options available
- To learn about different education, training and work opportunities
- To direct young people to the appropriate services.

## **Working methods and operating environment:**

- Individual meetings, evening cafe, small sports groups for boys and girls, youth camps, Facebook, Time Out, Vesijärven Ankkuri Project – a multisectoral support service for young people, Salpaus Further Education.

# Career coaching

- The idea of career coaching is to find young people a work trial placement or a salary-subsidised job in an enterprise, organisation or within the city council.
- Career coaches are an integral part of the work of Ohjaamo Lahti One-Stop guidance services.
- One of the career coaches is the coordinator of business cooperation and develops the Matkalla Duuniin ("on the way to work") services: [www.matkalladuuniin.fi](http://www.matkalladuuniin.fi).

## The aim of career coaching is

- Design a career plan together with young people themselves, including objectives, and then provide them with relevant coaching
- Help young people find relevant employers and prepare them for work
- Act as contact points and help young people in practical employment matters
- Carry out evaluations at the young people's work places and make up further plans.

# Youth Workshops

- Workshops provide work trials and salary-subsidised jobs for periods from 5 to 6 months. Workshops are communities in which young people learn by doing.
- During a workshop, young people get information about education, training and job opportunities and guidance for making their own plans for the future and on how to put them into practice.



# ....continued

## **CAR AND METAL WORKSHOP**

In the car and metal workshop, young people do car maintenance work and repairs, rust treatments and change tyres, brake pads and exhaust pipes.

## **ARTS AND CRAFTS WORKSHOP**

In the arts and crafts workshop, we offer a variety of services, ranging from clothes repairs to making stage props. Some of the most common job requests are to produce interior textiles and furniture upholstery.

## **CATERING WORKSHOP**

This workshop is a lunch cafe for both in-house and external customers. About 70 people come to have lunch in the cafe every day.



# ...continued

## **MEDIA WORKSHOP**

In the media workshop, we design and produce different types of print work and websites. It provides young people opportunities to develop their visual and technical skills in graphic design.

## **CARPENTRY WORKSHOP**

In this workshop, we renovate and repair wood furniture and carry out small carpentry works. The workshop also provides transport services.

## **ENVIRONMENT WORKSHOP**

In this workshop, we provide services that help improve Lahti environment and make it more appealing to its inhabitants. We work in parks, clear woods and do repair and paint jobs.



# ...continued

## **INTERIOR DECORATION WORKSHOP**

In this workshop, young people learn about interior decoration materials, techniques and styles. We make designs for clients and put them into practice, including specialist paintwork, furniture upgrades and sewing.

## **DRAMA WORKSHOP**

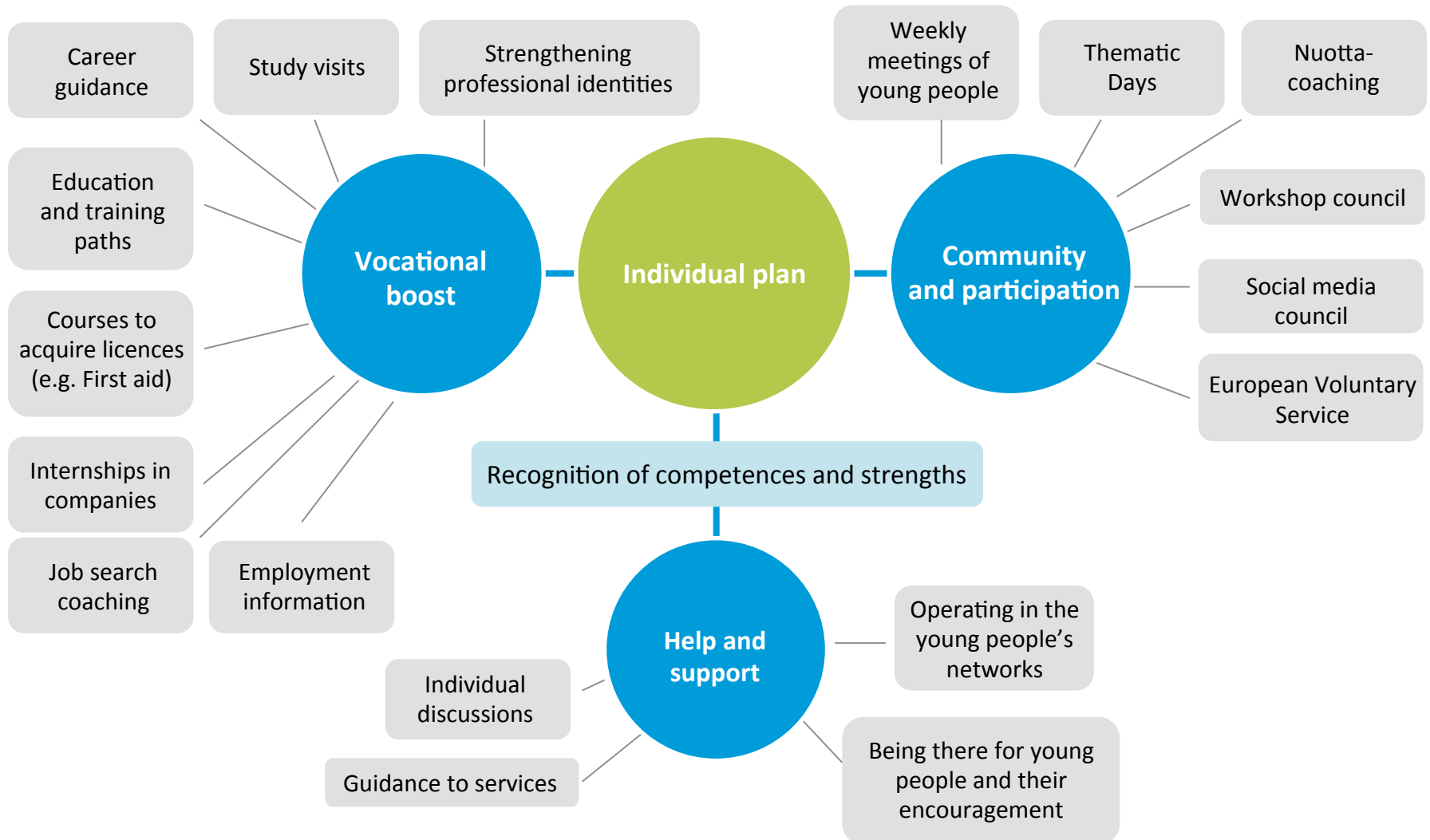
In the drama workshop, young people learn about art and culture. We realise a variety of cultural commissions from both in-house and external clients and make a final project, based on the needs of the group.



Sivistystoimiala

[www.lahti.fi](http://www.lahti.fi)

# Individual coaching



Thank you for your interest!



Sivistystoimiala

[www.lahti.fi](http://www.lahti.fi)